

PEXP405T-100-4

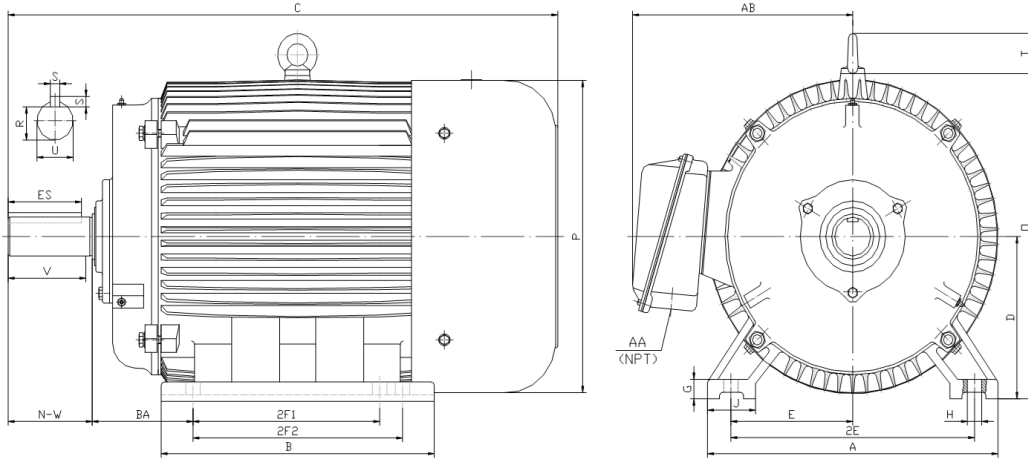
EXPLOSION PROOF ELECTRIC MOTOR

NEMA PREMIUM EFFICIENCY

TOTALLY ENCLOSED FAN COOLED; EXPLOSION PROOF ENCLOSURE

CLASS I DIVISION I GROUP C & D; CLASS II DIVISION I GROUP F & G

OPERATING TEMP CODE T3C



DIMENSIONS

HP	RPM	Frame	MOUNTING														
			A	B	C	D	G	H	J	E	2E	2F1	2F2	O	P	T	BA
100	1800	405T	19.30	17.90	38.00	10.00	1.25	0.81	3.15	8.00	16.00	12.25	13.75	21.10	21.60	2.60	6.62

Shaft Extension, Key Set						Conduit Box		Bearings		Mount
U	V	R	S	ES	N-W	AA	AB	DE	ODE	
2.88	7.00	2.45	0.75	5.65	7.25	3.00	16.60	6316	6314	F1

BEARING LUBRICATION: The bearings come lubricated with Mobil Polyrex EM Polyurea Grease. It is recommended that you add some additional lubrication when the motor is installed.

Three options (brands) for suitable lubrication include, but are not limited to, the following:

- 1.) Mobil Polyrex EM
- 2.) Citco Polyurea MP
- 3.) Conoco Phillips Polytac EP



PEXP405T-100-4



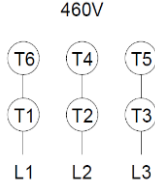


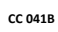
EXPLOSION PROOF ELECTRIC MOTOR
NEMA PREMIUM EFFICIENCY
TOTALLY ENCLOSED FAN COOLED; EXPLOSION PROOF ENCLOSURE
CLASS I DIVISION I GROUP C & D; CLASS II DIVISION I GROUP F & G
OPERATING TEMP CODE T3C

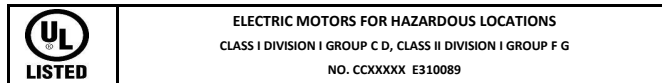
PERFORMANCE DATA

HP	RPM	Frame	Voltage	Frequency (Hz)	Full Load S.F.	Insulation Class	NEMA Design	Slip (%)	NEMA Code	Enclosure Type	IP Rating	Max. Ambient	Oper Temp Code	Max. KVAR
100	1790	405T	208-230/460	60	1.15	F	B	0.6	G	TEXP	55	40° C	T3C	24.9

Amps (460V)		Max. Amps (208V)	Efficiency (%)				Power Factor			Torque (ft-lb)			DE Bearing	ODE Bearing	Connection	Weight (lbs.)
FLA	LRA	60Hz	100%	75%	50%	Min.	100%	75%	50%	FLT	LRT %	BDT %				
109.5	725	242.2	95.4	95.4	94.8	94.5	0.87	0.85	0.82	293.4	125	200	6316	6314	9 Lead 2Δ/Δ	1426

NAME PLATE

 										CONNECTION DIAGRAMS						
PREMIUM EFFICIENT EXPLOSION PROOF MOTOR																
CAT NO:		PEXP405T-100-4		FRAME		405T		PHASE		3						
DE BRG		6316		ODE BRG		6314		CONN.		9 Lead 2Δ/Δ						
MAX AMB.		40° C		INS. CLASS		F		RATING		CONT WEIGHT 1426						
USABLE ON 208V 60HZ AT 242.2 MAX AMPS				SER												
DIVISION 1 CLASS I GROUP C D CLASS II GROUP F G						OPER TEMP CODE T3C										
60 HERTZ DATA	HP		100		RPM		1790		HP		100		RPM		1492	
	VOLTS 208-230/460				VOLTS 190/380											
	F.L. AMPS 242.2 - 219 / 109.5				F.L. AMPS 265.1/132.6											
	S.F. AMPS 125.9				S.F. AMPS 265.1/132.6											
	S.F. 1.15 DESIGN B CODE G				S.F. 1.0 DESIGN B CODE H											
	NEMA NOM.EFF. 95.4 % P.F. 0.87				NEMA NOM.EFF. 95.0 % P.F. 0.87											
	NEMA MIN.EFF. 94.5 %				NEMA MIN.EFF. 94.0 %											
	MAX. KVAR 24.9				LUB. Mobil Polyrex EM											
<small>General purpose use on industrial machinery installed in damp, dusty or dirty environments. These motors are designed for use in hazardous locations defined by class and group.</small>												460V 				
  																
<small>Hernando, Mississippi</small>																


APPLICATIONS:

General purpose use on pumps, fans, blowers, compressors, conveyors, material handling and other industrial machinery installed in damp, dusty or dirty environments. These motors are designed to be used in hazardous locations as defined by class and group.